

**WORLD CUP PUBLIC RACES CANSIGLIO
THURSDAY 30 SEPTEMBER MIDDLE DISTANCE
SATURDAY 02 OCTOBER LONG DISTANCE**

BULLETIN N. 1

RACE SCHEDULE

09.30 event office open

11.00 first start

13.30 prize giving ceremony

ORGANIZING COMMITTEE

Race Director: Mauro Nardi

Course setters and Controllers: World Cup technical staff

Organization: Comitato Friuli Venezia Giulia

Secretary: Chiara Sanzovo

IT manager: Alessio Dalfollo

REGISTRATION AND PAYMENTS

They must be entered in the online registration system by 11.59 pm on Sunday 26 September. The organization may accept, at its discretion, late entries.

For the BEGINNERS and DIRECT classes, entries will also be accepted on the morning of the race, by 11.00.

CLASSES

ESORDIENTI, M/W10, M/W12, M/W14, M/W16:

M/W18, ME/WE, M/W35, M/W45, M/W55, M/W65, M/W70, MB/WB, DIRECT Short, DIRECT Long

CONTROL DESCRIPTION

Control Description is printed on the map and will be available inside the departure corridor.

Scotch tape and scissors will not be available.

FINISH AND RESULTS

If the SPORTident station does not work, the competitor will have to punch his map with the manual punching machine and show this punching on arrival.

Maximum time: 2h00'

Results will be available in real time on Oribos Live and on Liveresultat

DEPOSIT MAPS

The maps will be deposited in the appropriate bags near the arrival.

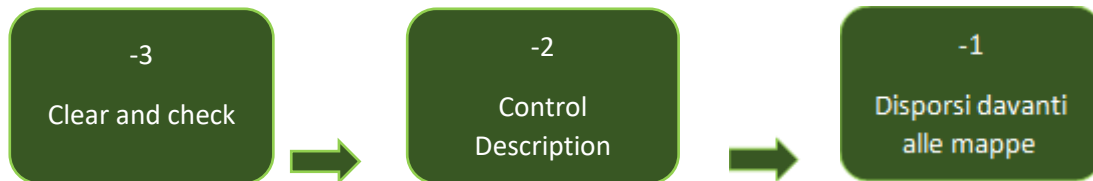
They will be available after the departure of the last competitor.

REFRESHMENT. As per FISO-COVID protocols, there will be no refreshment after the race.

START PROCEDURE

Start is near the meeting point.

The start is of the delayed start type. The starting triangle on the map is located about 50 meters from the starting line, with a taped course.



THURSDAY 30 SEPTEMBER MIDDLE DISTANCE

RACE ARENA and EVENT OFFICE

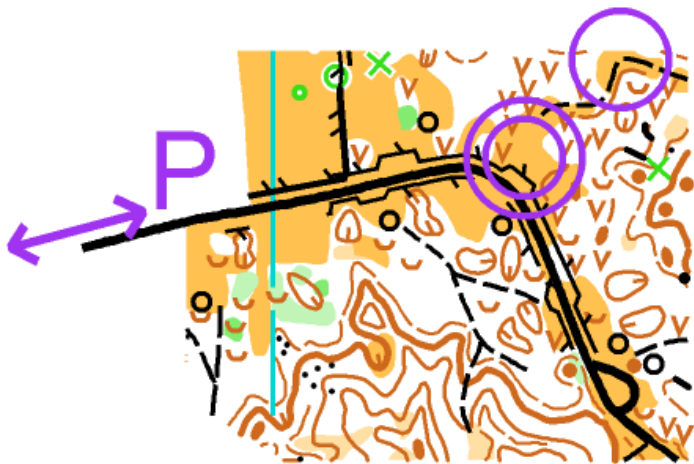
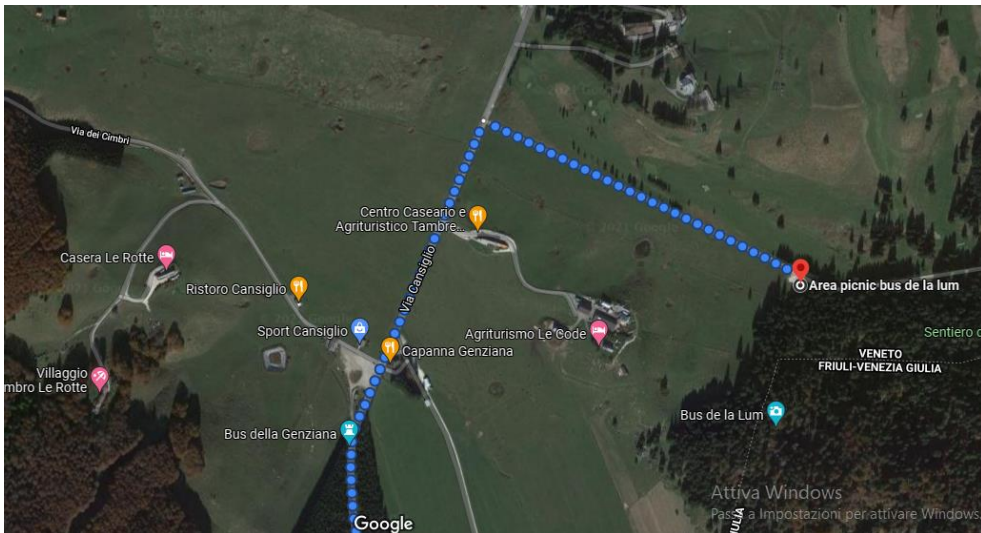
Arena is located at Area Picnic Bus de La Lum, coordinate: 46°03'37.4"N 12°24'37.9"E (46.060377, 12.410525)

Toilets available close to the Arena

No changing rooms in the area.

It is forbidden to place team tents on the Arena.

Parking is on the road to Bus de la Lum Picnic Area:



PRICE GIVING CEREMONY

They will take place near the event office, approximately at 13.30

The first three classified in the Elite categories and in the youth categories M / W10-12-14-16-18-20 will be awarded and only the first in the other categories.

MAP

Archeton - Contours 5 m, updated 2021.

Scala 1:10000 for all categories.

Format A4; the map is printed on water resistant material. In case of bad weather, transparent bags will be available at the departure.

RACE GROUND

Alpine terrain between 1000 and 1300m above sea level with areas rich in details alternating with faster areas, in general a dense network of paths.

CLASSES and COURSE LENGHTS

M10	1740	75	M55	2400	160	W35	2400	160
M12	1740	75	M65	2190	140	W45	2550	160
M14	2600	100	M70	2190	140	W55	2400	125

M16	2820	170	W10	1740	75	W65	2190	140
M18	3640	195	W12	1740	75	W70	2190	140
ME	4300	200	W14	2600	100	WB	2550	125
						DIRECT		
MB	2820	170	W16	2550	125	short	2600	100
M35	3640	195	W18	2820	170	DIRECT Long	3640	195
M45	2820	170	WE	3640	195	ESO	1740	75

For all classes the SPORTident punching system will be used, the Air + method will be activated (touch-free).

SATURDAY 02 OCTOBER LONG DISTANCE

RACE ARENA and EVENT OFFICE

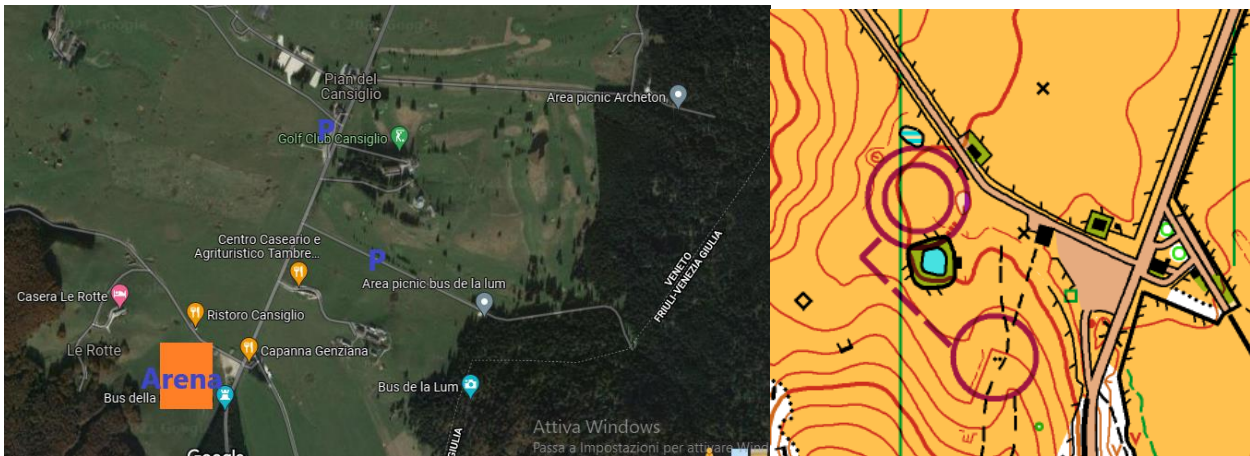
Arena close to Parking Area of Pian del Cansiglio (Rifugio Genziana),
coordinate: 46°03'33.0"N 12°24'01.5"E (46.059152, 12.400417)

Toilets available close to the Arena

No changing rooms in the area.

It is forbidden to place team tents on the Arena.

Parking is on the road to Bus de la Lum (as for Thursday race) or at Rifugio Sant'Osvaldo parking,



PRICE GIVING CEREMONY

They will take place near the event office, approximately at 13.30

The first three classified in the Elite categories and in the youth categories M / W10-12-14-16-18-20 will be awarded and only the first in the other categories.

MAP

Vallorch - Contour 5 m, updated 2021.

Scale 1:10000 for all classes.

Format A4; the map is printed on water resistant material. In case of bad weather, transparent bags will be available at the departure..

RACE GROUND

Alpine terrain between 1000 and 1300m above sea level with areas rich in details alternating with faster areas, in general a dense network of paths.

CLASSES and COURSE LENGTHS

M10	2.750	60	M55	6.010	125	W35	6.820	130
M12	2.750	60	M65	4.210	110	W45	6.010	125
M14	3.400	60	M70	4.210	110	W55	4.900	135
M16	4.940	135	W10	2.750	60	W65	4.750	110
M18	9.260	200	W12	2.750	60	W70	4.210	110
ME	10.280	250	W14	3.400	60	WB	4.750	110
MB	4.940	135	W16	4.750	110	DIRECT short	2.800	60
M35	9.260	200	W18	6.820	130	DIRECT Long	7.460	190
M45	7.460	190	WE	9.260	200	ESO	2.750	60

For all classes the SPORTident punching system will be used, the Air + method will be activated (touch-free).